

COMUNE DI SANTADI
Provincia di Carbonia-Iglesias

PIANO PARTICOLAREGGIATO
DI SANTADI CENTRO



TAV.

7

PROGETTO DEFINITIVO/ESECUTIVO

Ricognizione dei beni identitari

i tecnici incaricati:

prof. ing. Gian Paolo Gamberini

prof. ing. Antonello Sanna

gruppo di lavoro:

ing. Costantino Manca

ing. Gian Piero Cossu

ing. Ivan Francesco Ghisu

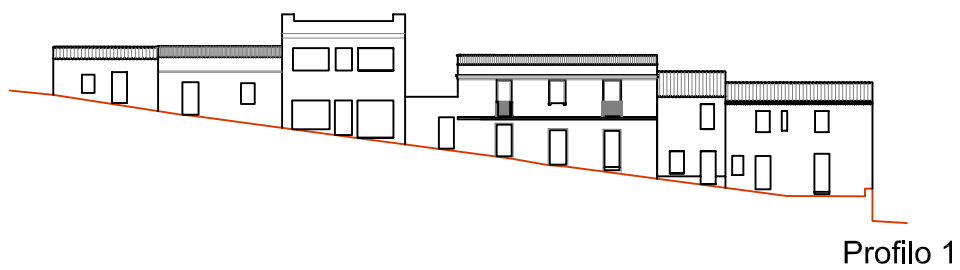
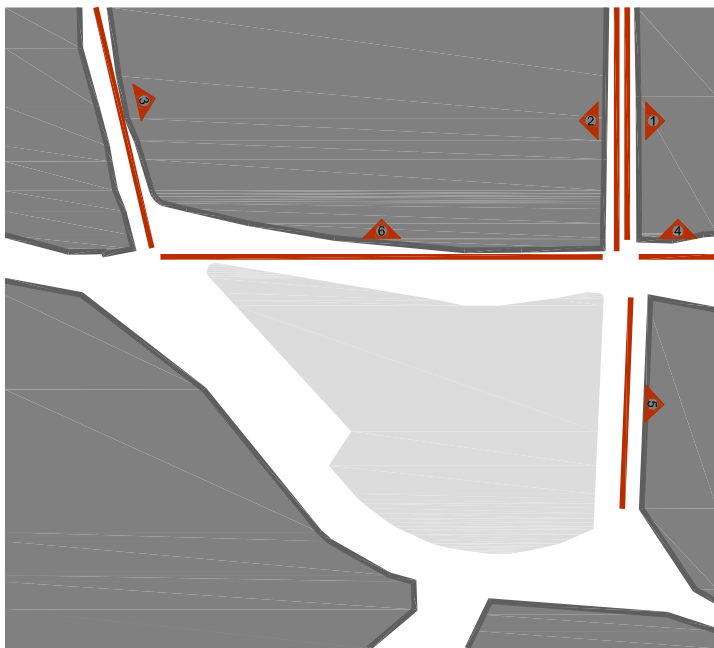
ing. Fausto Cuboni

ing. Alessandro Sitzia

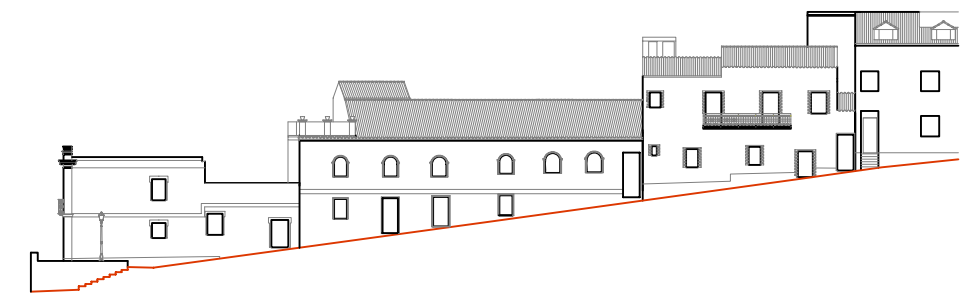
il Segretario Comunale

il Sindaco

il Tecnico Comunale



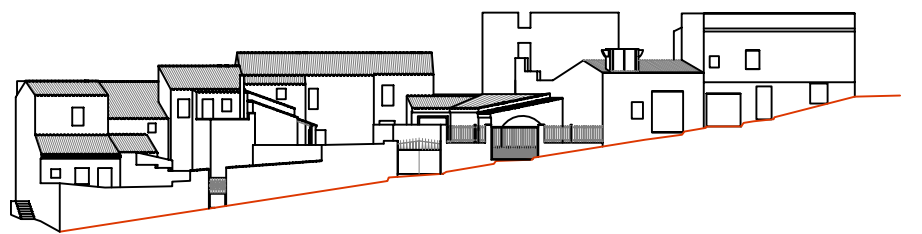
Profilo 1



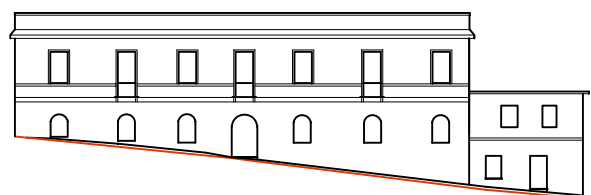
Profilo 2



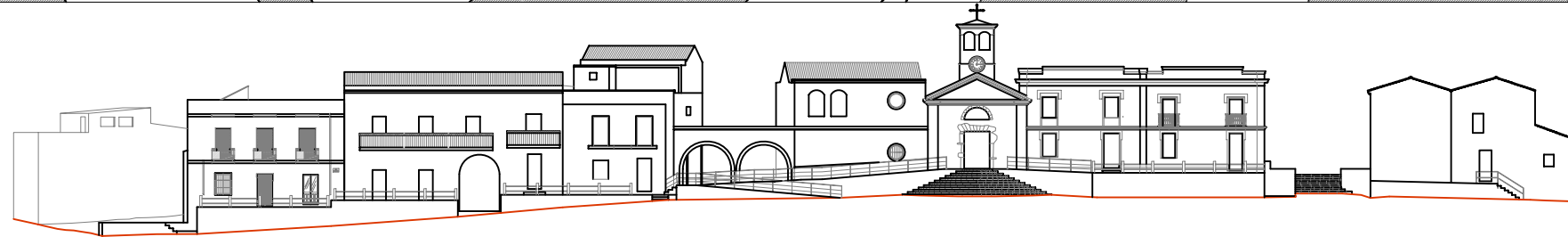
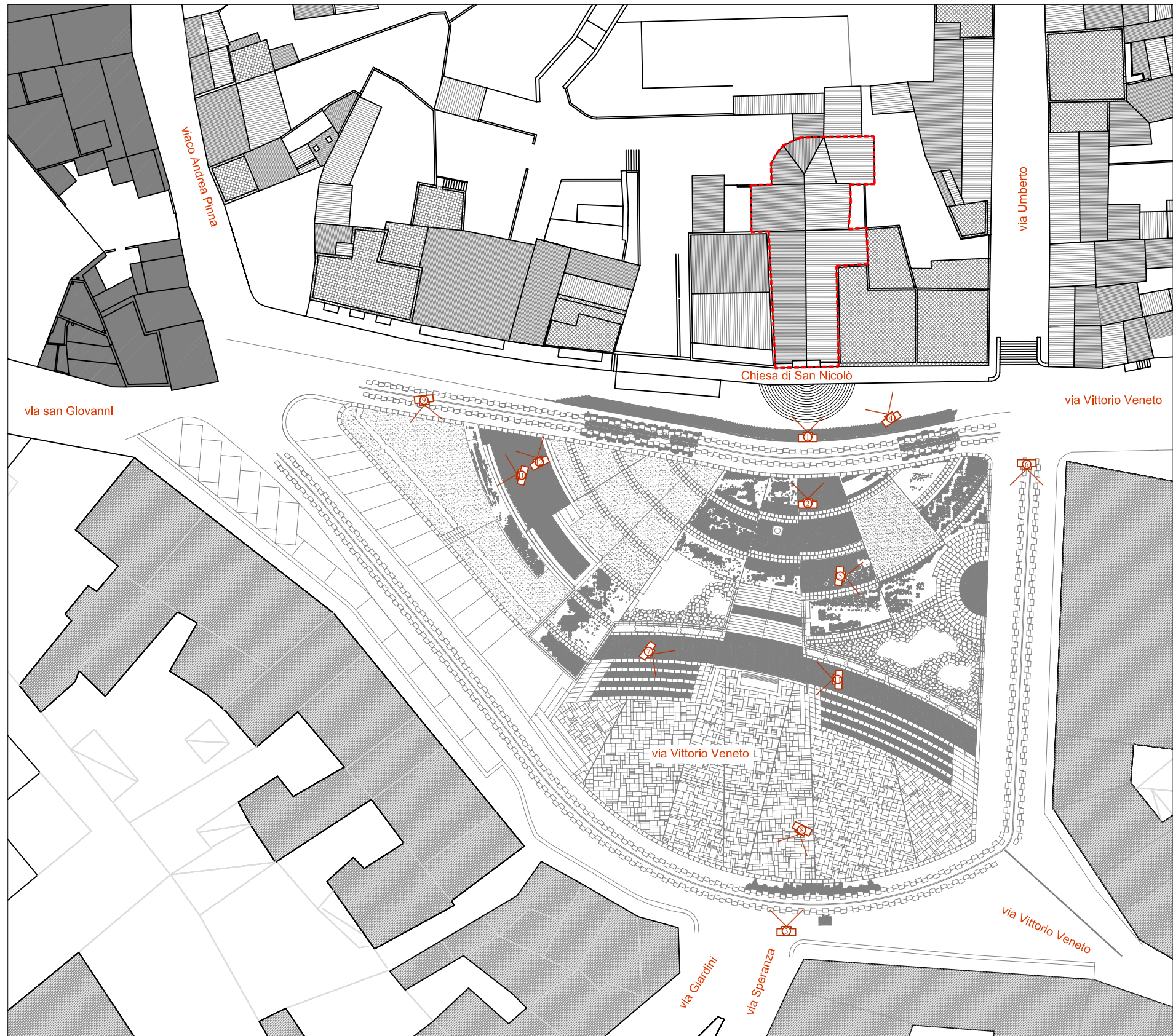
Profilo 3



Profilo 4



Profilo 5



Profilo 6



Foto 1



Foto 3



Foto 2



Foto 4



Foto 5

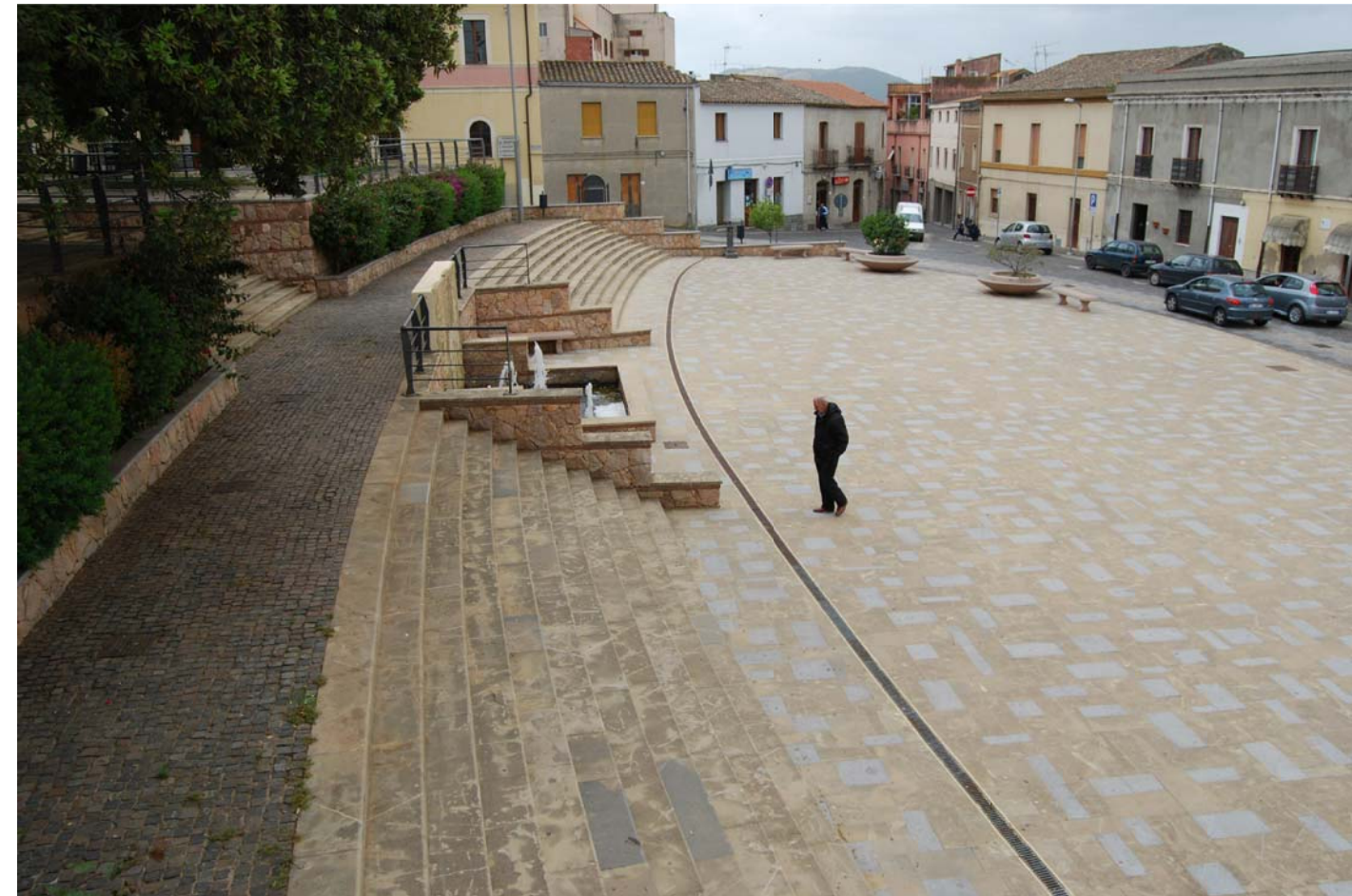


Foto 7



Foto 6



Foto 8



Foto 9



Foto 11



Foto 10



Foto 12



Fotografia aerea



Rielaborazione catastale d'impianto (primi del '900)



Ambito di tutela

