

COMUNE DI SANTADI
 Provincia di Cagliari
PIANO PARTICOLAREGGIATO
DI SANTADI CENTRO



TAV. **4-B** RILIEVO SETTORE B Piante - Profili

SCALA 1:200

i tecnici incaricati:

prof. ing. Gian Paolo Gambetini
 prof. ing. Antonello Sama

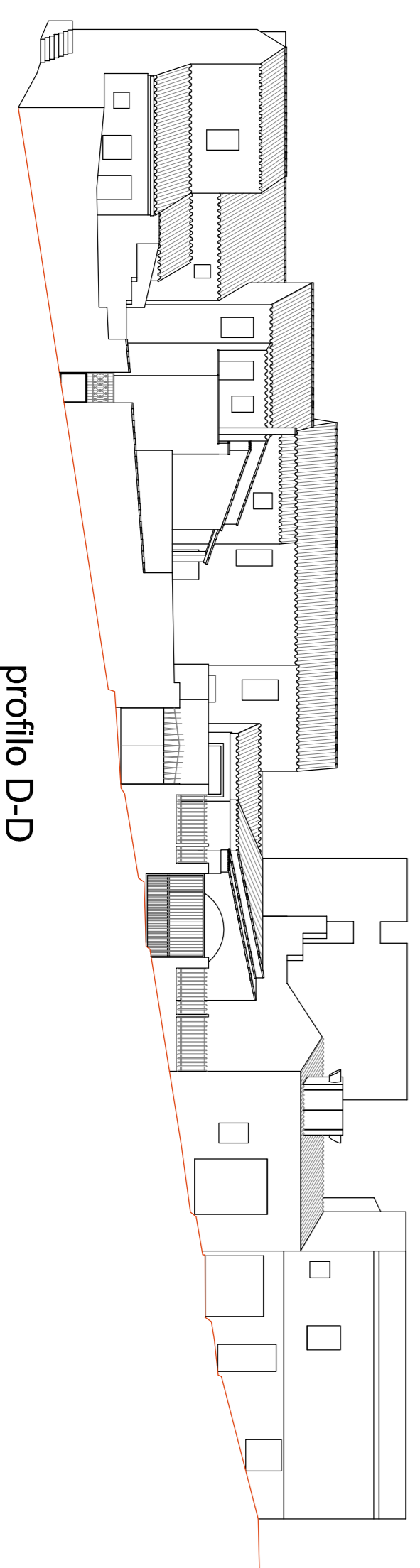
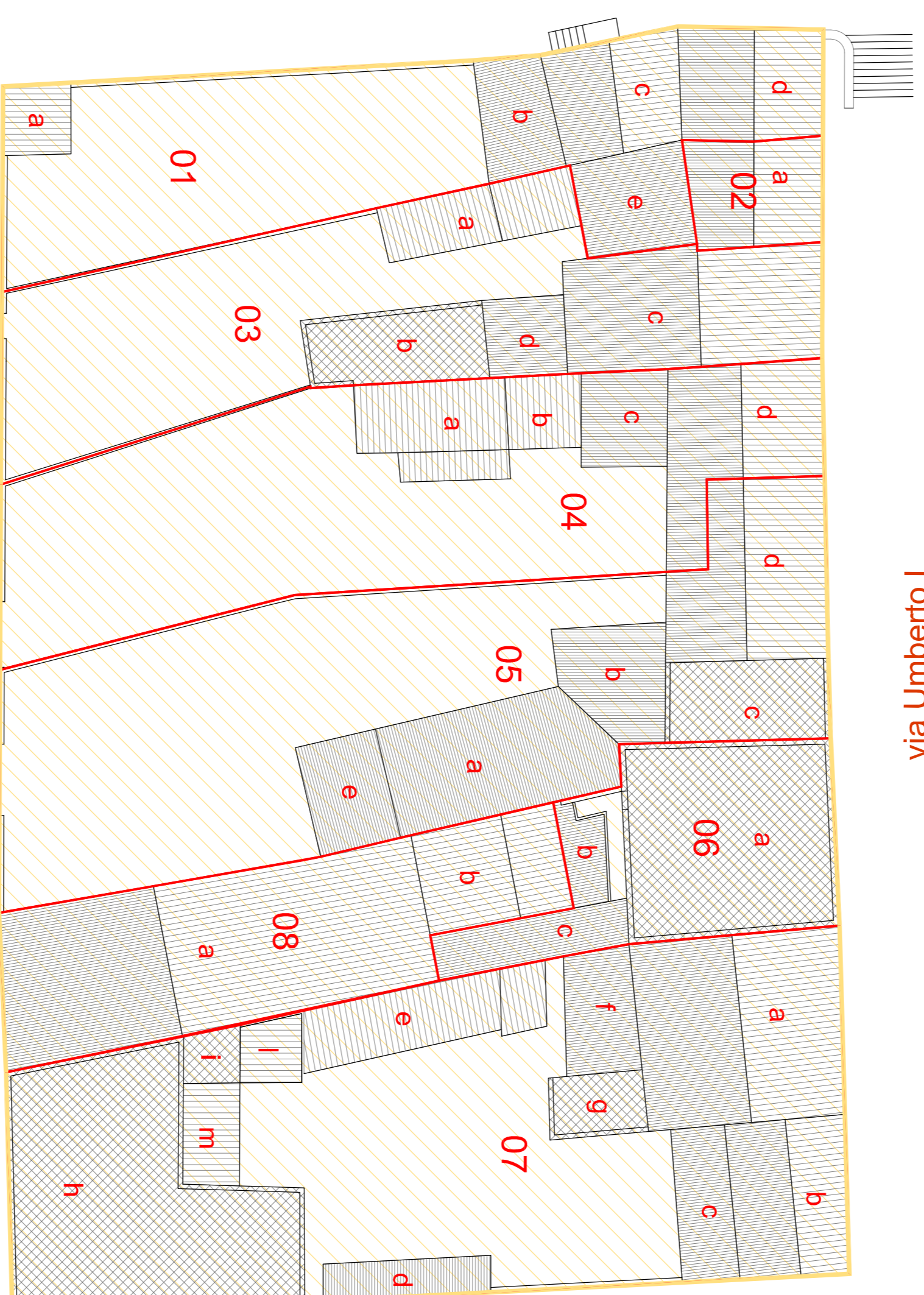
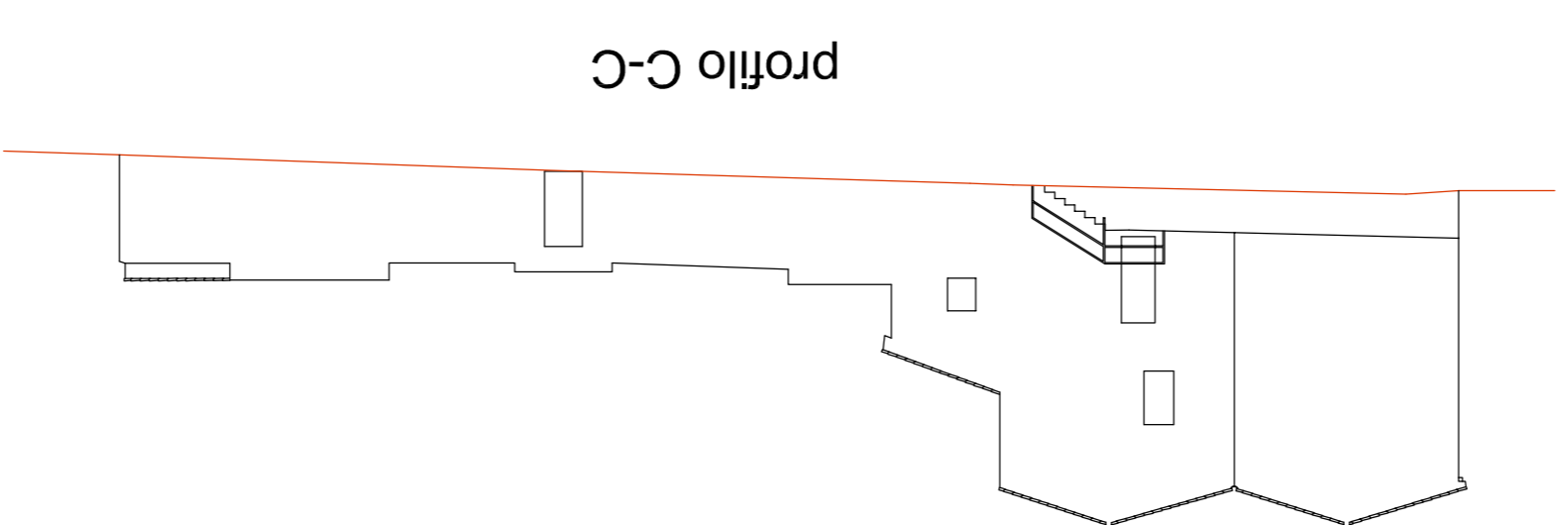
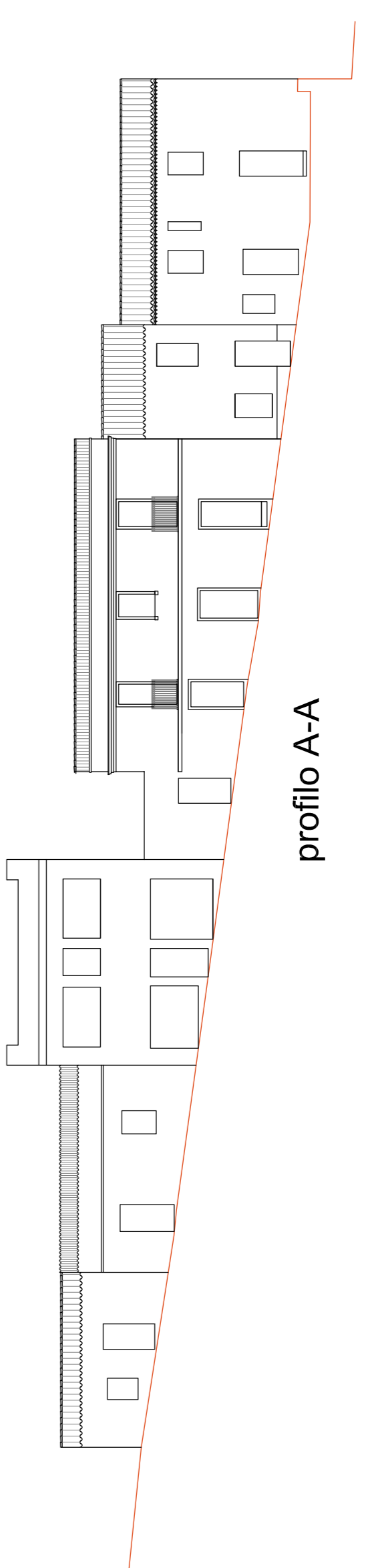
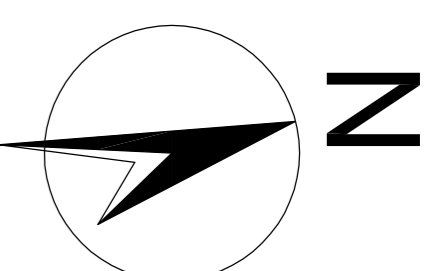
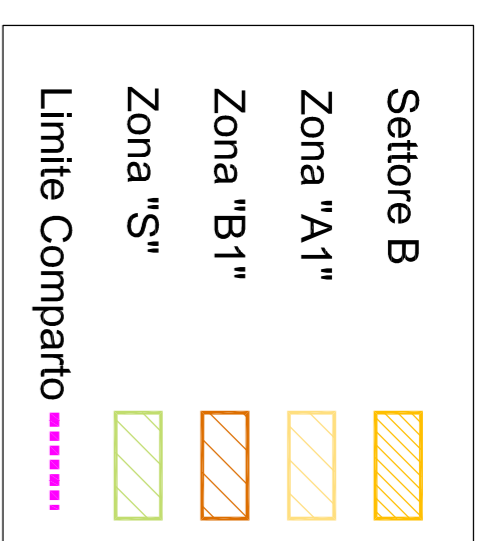
gruppo di lavoro:

ing. Costantino Manca
 ing. Gian Piero Cossu
 ing. Fausto Caboni
 ing. Alessandro Stizia

Il Segretario Comunale

Il Sindaco

Il Tecnico Comunale



profilo D-D

profilo B-B